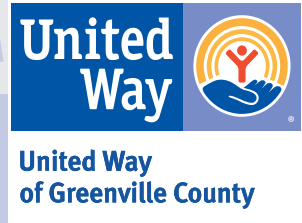


# GIVE. ADVOCATE. VOLUNTEER.



2010 REPORT TO THE COMMUNITY



# What's Inside

3	President/Chair Letter
4	Help Today. Strengthen Tomorrow.
5	Helping People in Need Right Now
7	Creating a Cycle of Success
8	Eliminating Future Needs: School Readiness
9	Eliminating Future Needs: High School Graduation
10	Eliminating Future Needs: Financial Stability
11	2010 Accomplishments
11	United Way Community Services
12	Campaign Highlights
13	Volunteer Leadership
16	Event Sponsors/In-Kind Creative Services & Media
17	2010 Financial Information

## Mission

To provide leadership in uniting our community to improve people's lives and build a vital, caring community.

## Vision

To be the most vital, caring community in America.



United Way  
of Greenville County

# Looking Back on a Great Year

From the merger with Hands On Greenville in January and the program investment process in the spring, to the record-breaking \$14.7 million community campaign last fall and the \$1.3 million in new grant monies received, 2010 was a milestone year for United Way of Greenville County.

While we've experienced many wonderful changes and seen great progress over the course of the year, we remain steadfast in our commitment to serving our community in two important ways.

First, we are working to meet the immediate, essential needs of people in Greenville County. We do this through our support of 86 programs offered by the 57 local partner agencies that provide direct services to the community. Whether it's helping individuals find food and shelter in a time of crisis or providing medical care or educational services to those in need, our partner agencies do inspiring work, showing people every day that Greenville County is a community with compassion.

2010 was the first year in a new three-year program funding cycle. In these challenging economic times, when nonprofit human service agencies are seeing the demand for their services increase while their budgets are being tightened, we opened the application process up to the community and received a record number of applications. At the end of this rigorous evaluation process, 86 programs were selected, including 15 innovative programs receiving United Way funding for the first time. All of these programs are essential to providing necessary services and support to assist individuals, families and neighborhoods throughout our community who need help right now.

United Way's second area of emphasis is eliminating future needs by focusing on long-term solutions to three priority issues in our community: school readiness, high school graduation and financial stability. United Way staff and volunteers are leading people and organizations from all across the community to create results-based strategies that will help us meet our aggressive 10-year goals in these critical areas.

Of course, none of this work would be possible without the community's support. We express our deepest gratitude to the donors and volunteers who made the 2010 community campaign such a resounding success. Capably led by Campaign Chair Dick Wilkerson, the record-breaking result reflects the hard work and generous spirit of thousands of donors and volunteers.

For our part, United Way promises to be careful stewards of the resources you have graciously shared with this community as we continue to help individuals and families in need right now, and work to prevent future need by building long-term cycles of success.

Thank you once again for supporting your community through United Way and making the choice to LIVE UNITED.



**Margaret E. Clark**  
2010 Chair  
United Way  
Board of Trustees

**Ted Hendry**  
President  
United Way of  
Greenville County

# Help Today. Strengthen Tomorrow.

United Way of Greenville County is working to advance the common good in our community by focusing on two distinct, yet equally important goals:

- 1) **HELPING PEOPLE IN NEED RIGHT NOW** through our committed support of 86 essential and effective local programs; and
- 2) **ELIMINATING FUTURE NEEDS** through our strategic approach to addressing our community's three priority issues of school readiness, high school graduation and financial stability.

No other organization has the scope and expertise to bring together our community's businesses, organizations, volunteers, government, faith community, private foundations and a network of health and human service agencies around this shared vision.

By focusing the best people, latest research and innovative practices around achieving measurable results, we maximize the impact of everyone's support.

We invite you to join us and become a part of this exciting work. Together, we can inspire hope, create meaningful change and provide opportunities for a better tomorrow.

That's what it means to LIVE UNITED.



**Jameel Allen**

Fluor Corporation

Member, African American Leadership Council

# Helping People in Need Right Now.

A Child's Haven: Therapeutic Child Treatment - 864.298.0025	\$140,000
Center for Developing Minds:	
PRIDE (Promoting Resources in Developmental Education) - 864.454.5115	\$48,188
Clarity: Preschool Developmental Readiness - 864.331.1400	\$127,000
Center for Developmental Services: Partner Management - 864.331.1300	\$125,000
Dunbar Child Development and Family Learning Center (GCS):	\$47,500
Parents As Teachers - 864.355.7361	
Julie Valentine Center: Parent Education and Support - 864.331.0560	\$50,000
Little Steps: Earn While You Learn - 864.243.8694	\$35,000
Meyer Center for Special Children: Developmental Preschool - 864.250.0005	\$291,000
Pleasant Valley Connection:	\$36,000
Child Development Center-3K/4K Classrooms - 864.236.0151	
Ready 4 Reading: Raising A Reader - 864.250.8868	\$12,500
YMCA of Greenville: Judson Community Center Preschool - 864.271.8800	\$70,000
YWCA of Greenville: Child Development Center - 864.373.6300	\$200,000
YWCA of Greenville: Co-location 864.373.6300	\$77,500

## Nurturing Children

### 2010/2011 PROGRAM FUNDING

United Way funds continue to support early childcare for at-risk children; services, education, and therapy for children with developmental differences and delays; and parenting, family literacy, and early literacy programs.

## Guiding Youth

### 2010/2011 PROGRAM FUNDING

Young men, women, and their parents or caregivers receive support in academic achievement, life skills and character development, and juvenile crime prevention.

Big Brothers Big Sisters of the Upstate:	\$75,000
Big Brothers Big Sisters of Greenville County - 864.242.0676	
Boy Scouts of America, Blue Ridge Council: Scoutreach - 864.233.8363	\$167,000
Communities In Schools of Greenville County: After School - 864.250.6737	\$220,000
Compass of Carolina: Second Chance - 864.467.3434	\$22,000
Girl Scouts of South Carolina - Mountains to Midlands:	\$100,000
Girls Leadership Development - 864.770.1400	
Greenville County Recreation District: After School - 864.288.6470	\$80,000
Pendleton Place: Smith House Independent Living - 864.467.3650	\$22,876
Phillis Wheatley Association: Phillis Wheatley Repertory Theatre - 864.346.1606	\$80,000
Pleasant Valley Connection: After School Tutorial and Summer Day Camp - 864.236.0151	\$39,600
Project HOPE Foundation: HOPE Academy - 864.676.0028	\$10,000
The Salvation Army: Boys & Girls Club - 864.235.6047	\$200,000
South Carolina Legal Services, Greenville Office:	\$36,960
Securing Public School Opportunities - 864.679.3232	
Sterling Hope Center: After School Enrichment - 864.349.0127	\$50,000
Urban League of the Upstate: Pre-College Enrollment Services - 864.244.3862	\$107,360
Urban League of the Upstate: Right Step Juvenile Diversion - 864.244.3862	\$69,500
Urban League of the Upstate: Urban Achievers - 864. 244.3862	\$34,100
YMCA of Greenville: Judson Community Center After School and Summer Day Camp - 864.271.8800	\$30,800
YouthBASE: Intensive Support - 864.349.1594	\$32,500
YWCA of Greenville: YES (Youth Education Success) - 864.373.6300	\$50,000
YWCA of Greenville: YW Teens - 864.373.6300	\$28,500

## Strengthening Families

Alston Wilkes Society: Employment Services for Ex-Offenders - 864.282.4528	\$40,000
Center for Community Services:	
Partnership Facilitation and Service Integration - 864.967.2022	\$51,000
Foothills Family Resources: Co-located Services - 864.836.1100	\$40,000
Greenville Area Interfaith Hospitality Network (GAIHN):	\$64,000
Sharing Hospitality with Homeless Families - 864.271.3424	
Greenville County Human Relations Commission:	\$70,000
Building a Sound Financial Future - 864.467.7095	
Greenville Housing Fund: Homebuyer Assistance - 864.235.6331	\$75,000
Greenville Literacy Association: Adult Basic Education - 864.467.3456	\$76,000
Greenville Literacy Association: English as a Second Language - 864.467.3456	\$94,000
Greenville Technical College: Child Care Assistance - 864.250.8380	\$45,990
Greer Relief and Resources Agency: J. Verne Smith Center - 864.848.5355	\$17,000
Homes of Hope: Affordable Housing - 864.269.4663	\$32,000
Project Host: C.C. Pearce Community Culinary School - 864.235.3403	\$30,000
Sunbelt Human Advancement Resources (SHARE):	\$58,000
LADDER (Lifelong Advancement through Diligence, Determination and Employment Resources) - 864.269.0700	
United Ministries: Adult Education - 864.232.6463	\$89,000
United Ministries: Employment Readiness - 864.232.6463	\$185,000

### 2010/2011 PROGRAM FUNDING

United Way provides funding and support for Greenville County residents in employment skills development, affordable housing and geographically-determined community service centers.

# Helping People in Need Right Now.

## Helping People

AID Upstate: Addictions Counseling for People Living with HIV/AIDS - 864.250.0607	\$28,500
Alzheimer's Association South Carolina Chapter: Alzheimer's Disease & Related Dementias - Support, Outreach & Awareness - 864.250.0029	\$30,000
Cancer Society of Greenville County: Community Health Education - 864.232.8439	\$10,000
Catholic Charities of the Piedmont Deanery: SAVE-A-SMILE - 864.242.2233	\$23,500
Clarity: Access to Developmental Health Care - 864.331.1400	\$72,500
Clarity: Hear Now - Adult Hearing Rehabilitation - 864.331.1400	\$30,000
Communities In Schools of Greenville County: Health Initiatives - 864.250.6737	\$47,500
Compass of Carolina: Counseling - 864.467.3434	\$95,000
Gateway House: Psychiatric Day Program - 864.242.9193	\$57,000
Greenville County Disabilities and Special Needs Board: Piedmont Skills - 864.679.0220	\$23,500
Greenville County First Steps: Nurse Family Partnership - 864.467.3239	\$52,000
Greenville County Recreation District: Camp Spearhead - 864.288.6470	\$47,500
Greenville Free Medical Clinic: Community Clinics - 864.232.1470	\$220,000
Mental Health America of Greenville County: Consumer Support Services - 864.467.3344	\$11,500
Mental Health America of Greenville County: "Mental Health Matters!" Education Program - 864.467.3344	\$13,158
New Horizon Family Health Services: Greenville Dental Health Project - 864.233.1534	\$95,000
New Horizon Family Health Services: Pharmacy Project - 864.233.1534	\$23,500
The Phoenix Center of Greenville: Phoenix Academy - 864.467.3790	\$44,380
Pleasant Valley Connection: Seniors Program - 864.236.0151	\$28,500
The Salvation Army: Rehabilitation - 864.235.4803	\$38,000
Senior Action: Comprehensive Services for Seniors - 864.467.3660	\$229,000
Taylor's Free Medical Clinic: Pharmacy - 864.244.1134	\$23,500

## Improving Improving Health

### 2010/2011 PROGRAM FUNDING

United Way provides funding to programs that give access to medical and mental health care, and supports seniors and persons with disabilities.

## Helping Helping in Times of Crisis

### 2010/2011 PROGRAM FUNDING

United Way is providing support for services that address basic needs, disaster assistance and interpersonal violence.

American Red Cross, Upstate South Carolina Chapter: Disaster Relief and Preparedness - 864.271.8222	\$100,000
Cancer Society of Greenville County: Patients in Financial Crisis - 864.232.8439	\$73,000
Compass of Carolina: Family Violence Intervention - 864.467.3434	\$80,000
Foothills Family Resources: Families First - 864.836.1100	\$33,500
Golden Strip Emergency Relief & Resource Agency: Crisis - 864.688.2233	\$87,000
Greer Relief and Resources Agency: Emergency Assistance - 864.848.5355	\$43,000
Julie Valentine Center: Intervention and Treatment - 864.331.0560	\$130,000
Loaves & Fishes: Bringing the Hungry Fresh Food Daily - 864.232.3595	\$18,000
Mental Health America of Greenville County: Crisis Intervention Services - 864.467.3344	\$118,000
Pendleton Place: Emergency Care - 864.467.3650	\$30,000
Safe Harbor: Domestic Violence Prevention, Intervention, and Legal Advocacy Services - 864.467.1177	\$75,000
The Salvation Army: Direct Services - 864.235.4803	\$60,000
The Salvation Army: Emergency Shelters - 864.235.4803	\$80,000
St. Francis Episcopal Church Hispanic Ministries: Centro de Familia/OPERA - 864.244.4510	\$20,000
United Ministries: Emergency Assistance - 864.232.6463	\$15,000
United Ministries: Place of Hope - 864.232.6463	\$20,000

# Creating a Cycle of Success

United Way is working to achieve long-term community change through the priority issues of school readiness, high school graduation and financial stability. We call this building a “Cycle of Success.”

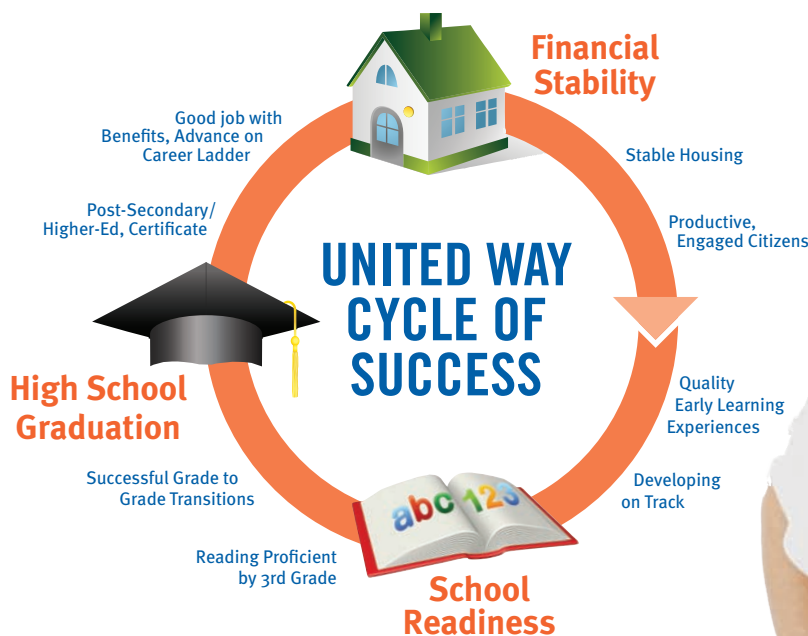
When babies are taught to learn, they become readers.

When those readers succeed in school, they become graduates.

When those graduates get good jobs and create stable homes, their families have a bright future.

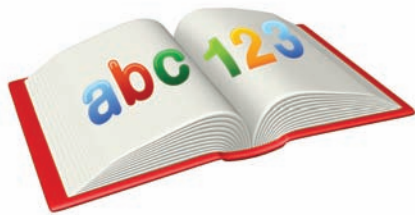
And they teach their babies to learn.

Now, we are building strategies, recruiting partners and leveraging resources to meet this long-term vision for success. These are big ideas that won't come to fruition overnight. It will take resources. It will take passion and commitment from the entire community. It will take you.



**Ann K. Robinson**  
Bank of America Merrill Lynch  
Chair, Community Impact Cabinet

# Eliminating Future Needs



## SCHOOL READINESS

**OUR 10-YEAR GOAL:** Reduce the percentage of children not consistently demonstrating readiness for first grade to 13 percent by 2018. This means that children will enter first grade on track in key developmental areas.

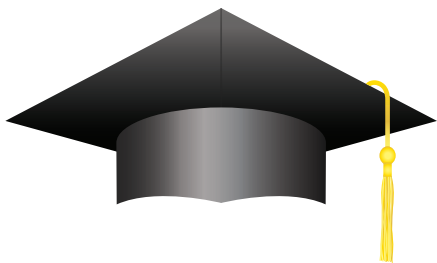
United Way's School Readiness Council is overseeing a community-wide planning process to reach this goal. The product of the process will be the School Readiness Roadmap which, when finished, will clearly define the action steps necessary for success.

One of the major accomplishments toward the school readiness goal in 2010 was the founding of the Institute for Child Success, a new center focused on early childhood development education and training, developed in collaboration with local and statewide partners.

One of the major obstacles in the area of school readiness is the affordability of quality early childhood education. In 2010, United Way partnered with Greenville County First Steps and the S.C. Department of Social Services ABC Voucher Program to create the Greenville County Early Child Care Scholarship fund. Leveraging donor dollars to obtain additional state and federal resources, the program will provide \$225,000 to help working families access quality child care over the next three years.



# Eliminating Future Needs



## HIGH SCHOOL GRADUATION

**OUR 10-YEAR GOAL:** We will increase the high school graduation rate to 85 percent by 2018.

Community challenges require community-based solutions. Students and their families face enormous challenges when it comes to helping students achieve success throughout the middle and high school years. In order to minimize these challenges and help the community increase its graduation rate, United Way is partnering with Communities in Schools to implement the Greenville County After-School Strategic Initiative through BOOST (Building Opportunities in Out-of-School Time).

Studies show that students who attend an after-school program are far more likely to be successful in school, and significantly less likely to become pregnant, involved in crime or drop out of high school. In 2010, United Way partner Communities in Schools was selected as the agency to implement the initiative. At the close of the year, 32 out-of-school programs have joined the county-wide network, with a goal of reaching 100 programs and 3,500 students by the summer.



# Eliminating Future Needs



## FINANCIAL STABILITY

**OUR 10-YEAR GOAL:** We will reduce the number of families who spend more than 40 percent of their income on housing from 30,000 to 22,000 in 2018. Our work toward achieving this goal will help families increase income, build savings, and gain and sustain assets so they can create a more stable financial future.

Among the biggest accomplishments on the financial stability front in 2010 was the creation of the Greenville County Individual Development Account, or IDA, Network. The goal of the program is to provide Greenville County residents with the tools to learn, earn and save.

Pooling resources with our partners at the Greenville Housing Fund, United Way successfully secured a 1-to-1 matching grant from the U.S. Department of Health and Human Services that will total \$600,000 over the next five years. That money will fund an innovative matched savings program designed to help low-income individuals save towards the purchase of a long-term asset, such as a home, higher education, or to start or expand a small business. More than 170 families will take part in the program over the next five years.

In another successful example of leveraging donor dollars, last spring United Way was awarded a federal AmeriCorps grant. Annual funding of \$286,000 for the next three years will support the placement of 27 AmeriCorps members in the community. These full- and part-time members are helping local nonprofits advance their financial stability initiatives, ranging from tax preparation and financial literacy projects, to career coaching for students and grassroots community development.

**Judith Aughtry**

Community Impact Cabinet



# Significant 2010 Accomplishments

**UNITED WAY'S ANNUAL SCHOOL TOOLS PROJECT** provided school supplies to more than 3,000 low-income students. Eighty-four local companies pitched in to collect supplies at their workplaces.

**VOLUNTEER INCOME TAX ASSISTANCE (VITA)** program provided free tax preparation services, directly impacting more than 2,100 individuals and families.

Allocated \$98,000 in **EMERGENCY ASSISTANCE GRANTS** to help meet the spike in demand for services. The allocations were designated for direct service to the community in the form of rent/mortgage assistance, utilities assistance and/or food assistance.

**HANDS ON GREENVILLE DAY 2010** brought together 5,427 volunteers to complete 305 community service projects in one day. For the year, United Way Hands On Greenville helped fill more than 45,000 volunteer opportunities, with an estimated economic impact of nearly \$1 million.

**UNITED WAY 2-1-1**, an information and referral phone service that links callers to local health and human service resources, answered 9,739 calls for help.

**UNITED WAY'S FAITH-BASED ROUNDTABLE** engaged over 30 congregations in education, networking, and building awareness of United Way priorities, 12 of which participated in the Children's Sabbath to spotlight children's issues in October 2010.

**UNITED WAY'S PUBLIC POLICY COMMITTEE** conducted an Upstate Legislative Caucus meeting to highlight the importance of the Career Readiness Certificate (Work Keys) and facilitated a community meeting that introduced sector-based strategies for workforce development to the Greenville workforce community.

## United Way Community Services

By calling **United Way 2-1-1**, callers can be linked with resources that assist with a variety of health and human service issues, including basic needs assistance, counseling, youth & adult education, employment, credit housing, and more.

2-1-1 operates 24/7

Contact: 2-1-1 or [unitedwaygc.org/211](http://unitedwaygc.org/211)

**United Way Child Care Resource & Referral (CCR&R)** offers assistance to parents, child care providers and businesses.

Resources for parents, educators and employers who are seeking information and technical assistance regarding quality childcare.

Contact: 864-467-4800 or [childcarehelpline.org](http://childcarehelpline.org)

**United Way Hands On Greenville** offers a variety of year-round possibilities for people to give back to the community through volunteering from one-time projects to on-going opportunities. HOG also offers a comprehensive online database of volunteer opportunities.

Contact: 864-242-4224 or [handsongreenville.org](http://handsongreenville.org)

# 2010 Community Campaign Highlights

---

\$14,712,161 was raised.

---

37,000 donors contributed through the campaign.

---

477 companies participated in the campaign.

---

Workplace campaigns represented 72% of the total campaign.

---

209 companies contributed a corporate gift, representing 20% of the total campaign.

---

Retirees, medical professionals and others contributing outside the workplace represent 8% of the total campaign.

---

15 new campaigns contributed \$48,331 from employee and corporate gifts.

---

3,748 Palmetto Society donors contributed \$6,717,088.

---

Contributions from Palmetto Society donors giving \$1,000 or more represent 46% of the total campaign & 58% of individual donors and workplace employee dollars.

---

Thanks to the Stathakis family of restaurants and Stax restaurants for giving generous coupons to anyone pledging \$250 or more.

---

A special thank you to Erwin-Penland, Inc., who provided in-kind creative services to develop promotional materials for the 2010 campaign.

---

Special thanks to Table 301 for graciously donating certificates in recognition of Palmetto Society donors.

---

Thanks to the Greenville Recreation District for providing two evenings at their water parks for a drawing for companies that had a 10% increase.

---



## A Caring Spirit

“ We cannot choose the times in which we live, but we can choose how we live in the times we are given. Through this campaign, you have demonstrated that you choose to “Live United” by giving back to the community and the people who need us most right now. For that, I thank you. ”

**Dick Wilkerson**

Michelin North America  
2010 United Way Campaign Chair

# 2010 Volunteer Leadership

## United Way Board of Trustees

### Executive Committee

#### Chair

Margaret E. Clark

#### Vice Chair & Chair Elect

W. Howard Boyd Jr.  
Gallivan, White & Boyd, P.A.

#### Treasurer

Jerry O. Chapman  
Duke Energy

#### Secretary

Gene Covington

#### Immediate Past Chair

William B. Engle  
Stark RFID

#### Chair, Annual Campaign

Richard Wilkerson  
Michelin North America

#### Vice Chair, Annual Campaign

Annette Allen  
Fluor Corporation

#### Chair, Community Impact Cabinet

Ann K. Robinson  
Bank of America  
Merrill Lynch

#### Vice Chair, Community Impact Cabinet

C. Frederick West

### Trustees

Jim Akerhielm  
Annette Allen  
Fluor Corporation  
Judith Aughtry  
James M. Bourey  
Elliott Davis, LLC  
W. Howard Boyd Jr.  
Gallivan, White & Boyd, P.A.  
Dennis M. Braasch  
Braasch Building Group  
Jerry O. Chapman  
Duke Energy  
Merl F. Code  
Ogletree, Deakins, Nash,  
Smoak & Stewart, P.C.  
Gene Covington

The Honorable Chandra E. Dillard  
Furman University

Doran A. Dunaway  
Greenville Hospital System

Frances D. Ellison

William B. Engle  
Stark RFID

Scott Evans

BB&T

Jim Evers

AT&T

Dr. Phinnize J. Fisher  
Greenville County Schools

Hunter Gibson

Easlan Capital Inc.

James Curtis Harkness  
Greenville Technical College

Flavia Harton

Michael J. Hayes  
WYFF 4

Guy Hempel  
WHNS-Fox Carolina

Camilla F. Hertwig  
Strom Thurmond Institute

Herb Johnson Jr.  
Michelin North America

Ray A. Lattimore  
Marketplace Staffing

Sandy McLean  
World Acceptance Corporation

Maureen Normoyle  
GE Energy

George F. O'Brien III  
WHM Capital Advisors

Jason Richards  
NAI Earle Furman, LLC

Ann K. Robinson  
Bank of America Merrill Lynch

R. Arthur Seaver Jr.  
Greenville First Bank

Matthew B. Smith  
Assetpoint LLC

Patrici a Sullivan  
Greenville Post Office

William R. Timmons III  
Canal Insurance Company

Dennis Trice  
Mitsubishi Polyester  
Film, Inc.

C. Fredrick West

Richard Wilkerson  
Michelin North America

## Campaign Cabinet

Richard Wilkerson, Chair  
Michelin North America

Annette Allen, Vice Chair  
Fluor Corporation

Jim Akerhielm  
Christopher E. Beard, CFP  
Gateway Wealth Strategies

James M. Bourey  
Elliott Davis, LLC

Michael Cinquemani  
Master PT

Chip Cook  
Sealed Air Corporation

Matthew A. Cotner  
CertusBank

Anne S. Ellefson  
Haynsworth Sinkler Boyd, P.A.

Hunter Gibson  
Easlan Capital Inc.

Jo Watson Hackl  
Wyche Burgess Freeman &  
Parham, P.A.

Michael J. Hayes  
WYFF 4

Mary Jeffrey  
The Hayes Group  
International, Inc.

Jennifer E. Johnsen  
Gallivan, White & Boyd, P.A.

Herb Johnson Jr.  
Michelin North America

Robert Keiger  
Rosenfeld Einstein &  
Associates Insurance  
Agency, Inc.

Jil Littlejohn  
YWCA of Greenville

Hank Sanders  
Jobscope, LLC

Caroline W. Schroder  
Coldwell Banker Caine

Yolanda Scott-Boone  
SunTrust

R. Arthur Seaver Jr.  
Greenville First Bank

Michael J. Spitzmiller  
South Carolina Bank and Trust

Greg Szabo  
Nutra Manufacturing, Inc.

Scott Taylor  
BB&T

Dr. John W. Womack  
Piedmont Orthopaedic  
Associates

Michelle DeLuca Yarbrough  
Gallivan, White & Boyd, P.A.  
Walt J. Zoladz

## Community Impact Cabinet

Ann K. Robinson, Chair  
Bank of America  
Merrill Lynch

C. Fredrick West, Vice Chair

Cindy C. Alewine  
Alzheimer's Association,  
South Carolina Chapter

Vivian C. Anthony  
County of Greenville  
Employees

Judith Aughtry  
Dennis M. Braasch

Braasch Building Group  
Gallivan, White & Boyd, P.A.

Jim Burns

TD Bank

Matthew S. Cardone  
Bank of America, N.A.

Rev. Jon Chalmers  
Christ Church Episcopal

Lochrane Davids  
Greenville Hospital System

Pastor Sean Dogan  
Long Branch Baptist Church

Flavia Harton  
Deanna Hemberger

Lee & Associates - Greenville

Camilla F. Hertwig  
Strom Thurmond Institute

Timothy R. Justice  
Rescom Construction

Martha H. Kent  
Prudential C. Dan Joyner  
Company REALTORS -  
Augusta Road Office

Ray A. Lattimore  
Marketplace Staffing

W. Derek Lewis  
First Steps of  
Greenville County

Lillie Goodman Lewis  
Katherine Lyles

Michelin North America

John D. Malone  
Margaret J. McJunkin

Nicholtown Neighborhood  
Association

Deborah McKetty  
Greenville Housing Fund

Johnny M. Mickler  
The Urban League of the  
Upstate, Inc.

Kenneth D. Moore  
GE Energy

Robert W. Morris  
Community Foundation of  
Greenville, Inc.

Caroline T. Robertson  
Greer Relief and Resources  
Agency, Inc.

Minor M. Shaw  
Andrea G. Smith

Senior Action, Inc.

Karen Sparkman  
Greenville County Schools

Patricia Sullivan  
Greenville Post Office

Paul B. Wickensimer  
Greenville County  
Clerk of Court

## School Readiness Council

Karen Sparkman, Chair  
Greenville County Schools

Lochrane Davids, Vice Chair  
Greenville Hospital System

Steve Bailey  
Merus Refreshment Services

Colleen M. Bridger  
Institute for Child Success

Gray Buchanan  
Greenville Hospital System

Reno Deaton  
City of Greer

Frank S. Holleman III  
Southern Environmental  
Law Center

Ruby Jones  
Sunbelt Human Advancement  
Resources, Inc. (SHARE)

Timothy R. Justice  
Rescom Construction

Andrew Kurtz  
ProActive Technology

W. Derek Lewis  
First Steps of  
Greenville County

Charles Love  
USC Upstate

Regenia McClain  
Duncan Chapel  
Elementary School

# 2010 Volunteer Leadership

Amanda Merchant  
New Horizon Family  
Health Services, Inc.  
Xanthene S. Norris  
County of Greenville  
Amy Picklesimer  
Greenville Hospital System  
Susan Riordan  
Linda Russell  
William F. Schmidt III  
Greenville Hospital System  
Michelle R. Shain  
Greenville Hospital System  
James O. Smeaton III

## High School Graduation Council

Flavia Harton, Chair  
Deanna Hemberger, Vice Chair  
Lee & Associates - Greenville  
Deloris Barksdale  
Upstate Circle of Friends  
Bill Barringer  
YMCA of Greenville  
Barbara F. Bass  
The Urban League of the Upstate, Inc.  
L. Bruce Cannon  
Michelin North America  
Edward G. Cochrane II  
Mount Vernon Mills, Inc.  
Ingrid Blackwelder Erwin  
Parker, Poe, Adams & Bernstein, LLP  
Lillian Garcia  
Greenville Hospital System  
James Curtis Harkness  
Greenville Technical College  
Sargent Damon Hubber  
Greenville County Sheriff's Office  
Lou Lavelly Jr.  
Travelers Rest High School  
Lynda Leventis-Wells  
Greenville Technical College  
Lillie Goodman Lewis  
Grier G. Mullins  
Public Education Partners of  
Greenville County  
E. Cheryl Ponder  
SC Governor's School for the Arts  
and Humanities  
James O. Richardson  
Jacobs Engineering Group Inc.  
Ansel Sanders  
A.J. Whittenberg Elementary School  
Kimberly Yvette Smith  
Michelin North America

Susi F. Smith  
Communities In Schools of  
Greenville County, Inc.  
Tomiko Williams  
SC Dep't of Juvenile Justice

## Financial Stability Council

Deborah Casey Brown, Chair  
Gallivan, White & Boyd, P.A.  
John D. Malone, Vice Chair  
Eric B. Amstutz  
Wyche, P.A.  
Brent R. Cooler  
World Acceptance Corporation  
Cynthia Eason  
Greenville Technical College  
Bruce M. Forbes  
Sunbelt Human Advancement  
Resources, Inc. (SHARE)  
Leslie Harrison  
Hank Hyatt  
Greater Greenville Chamber  
of Commerce  
Hope Jeter  
Ray A. Lattimore  
Marketplace Staffing  
Martin L. Livingston Jr.  
Greenville County  
Redevelopment Authority  
Deborah McKetty  
Greenville Housing Fund  
Minor M. Shaw  
Virginia B. Stroud  
City of Greenville  
Rosie Denise Sullivan  
Lockheed Martin  
Elizabeth L. Templeton  
United Ministries  
Lynn J. Waters  
Greenville Hospital System  
Russel T. Williams  
BankGreenville

## Program Investment Team

Martha H. Kent, Chair  
Prudential C. Dan Joyner Company  
REALTORS - Augusta Road Office  
Kenneth D. Moore, Vice Chair  
GE Energy

Corey D. Barnard  
TD Bank  
Ronnie L. Brown  
Goodwill Industries of Upstate/  
Midlands South Carolina, Inc.  
Francis J. Crozier II  
Michelin North America  
Susan E. Cyr  
Rachel M. Green  
Virginia College of Greenville  
Jennifer J. Harrill  
GMAC Mortgage  
Leslie Harrison  
Monica Johnson  
Michelin North America  
Eric A. Mencken  
DeVita & Associates, Inc.  
Mark L. Mullins  
TD Bank  
James A. Pierce  
Marietta Pallet Company, Inc.  
Tiffany Santagati-Simpson  
BB&T  
James O. Smeaton III

## Children Evaluation Team

James O. Smeaton III, Chair  
Mark L. Mullins, Vice Chair  
TD Bank  
Jemmott Duncan  
BMW Manufacturing Co, LLC  
Allen L. Freeman  
Freeman & Major Architects  
Caroline Van Hook  
Elliott Davis, LLC  
Matthew K. Johnson  
Ogletree, Deakins, Nash, Smoak &  
Stewart, P.C.  
Olivia Morris  
Gretchen W. Mullinax  
Gallivan, White & Boyd, P.A.  
Jeffrey M. Wolf  
Rosenfeld Einstein & Associates  
Insurance Agency, Inc.

## Crisis Evaluation Team

Eric A. Mencken, Chair  
DeVita & Associates, Inc.  
Rachel M. Green, Vice Chair  
Virginia College  
Wil Brasington  
Clemson University  
Dianne Clarke-Kudless  
Enterprise Services, LLC

Roberta A. Etzkorn  
O'Neal, Inc.  
Jonn Livingston  
Stephen R. Luck  
Leslie Milling  
Fluor Corporation  
L. Scot Wendelken  
Greenville County Emergency  
Medical Services  
Robert Wilkins  
Wilkins & Boutin, LLC

## Families Evaluation Team

Leslie Harrison, Chair  
Francis J. Crozier II, Vice Chair  
Michelin North America  
Lori P. Center  
Bon Secours St. Francis Health System  
Steven Klinner  
WASTEQUIP  
Kevin Laird  
Goodwyn, Mills and Cawood, Inc  
Princella Lee-Bridges  
Bridges from Augusta, Inc.  
Eric J. Morris  
BB&T  
J. Timothy Martin  
Greenville Technical College  
Mark Pfeiler  
Perceptis  
E. Christopher Troup  
Greenville Hospital System

## Health Evaluation Team

Susan E. Cyr, Chair  
Jennifer J. Harrill, Vice Chair  
GMAC Mortgage  
Nichole T. Andrighetti  
Nelson Mullins Riley &  
Scarborough LLP  
Vivian C. Anthony  
County of Greenville  
Gary Curtis Brison  
Michelin North America  
Kelly A. Carson  
TD Bank  
Chris Collins  
South Carolina Insurance  
Brokers, Inc.  
Allison J. Cook  
Canal Insurance Company

# 2010 Volunteer Leadership

Christine B. Haltiwanger  
Rosenfeld Einstein & Associates  
Insurance Agency, Inc.

Terrie S. Long  
Greenville Hospital System  
Hannah Rogers Metcalfe  
Wyche, P.A.

Kenneth D. Moore  
GE Energy

Emmanuela P. Rodenberg  
Bill Sorochak  
Ronald McDonald House Charities  
of the Carolinas

Donna Stroud  
Fluor Corporation

## Youth Evaluation Team

Tiffany Santagati-Simpson, Chair  
BB&T

Corey D. Barnard, Vice Chair  
TD Bank

Emily K. Allen  
Sturgis G. Allen  
Michelin Americas Research Company

Kwame L. Channell  
Cryovac Division, Sealed Air  
Corporation

Edward G. Cochrane II  
Mount Vernon Mills, Inc.

Paula S. King  
BankGreenville

Jill F. Mashburn  
Fluor Corporation

Nancy E. Meyers  
Fluor Corporation

Jackie Mondora  
GE Energy

Dawn E. Pryor  
DesignStrategies, LLC

Colleen Currie Ramirez  
Fluor Corporation

Drew Rogers  
Elliott Davis, LLC

## Faith-Based Roundtable

Rev. Jon Chalmers, Chair  
Christ Church Episcopal

Rabbi Jeremy Master, Vice Chair  
Temple of Israel

Minister Kim Adams  
Long Branch Baptist Church

Pastor Mark Cerniglia  
Lutheran Church of Our Savior  
Rev. Susan Crowell

Trinity Lutheran Church

Deacon Gabriel Cuervo  
Catholic Charities of  
the Piedmont

Deanery, Diocese of Charleston

Pastor Samuel Cureton  
Reedy River Missionary Baptist Church

Rev. Robin Dease  
John Wesley United Methodist Church

Pastor Sean Dogan  
Long Branch Baptist Church

Rev. Vardrey Flemming  
Bethel Bible Missionary Church

Dr. John B. Hartman  
Greenville Hospital System

Rev. Jerry M. Hill  
Buncombe Street United Methodist

Evangelist Hasker Hudgens  
Redemption World Outreach Center

Rev. Pat Jobe  
Greenville Unitarian Universalist  
Fellowship

Pastor Curtis Johnson  
Valley Brook Outreach Baptist Church

Elizabeth I. Keith  
Bon Secours St. Francis Health System

Rev. Tony McDade  
GAIHN

Susan McLarty  
Westminster Presbyterian Church

Mr. James A. Pierce  
Marietta Pallet Company, Inc.

Rev. Steve Saxe  
Luther Church of the  
Good Shepherd - LCMS

Laura Shelley  
First Baptist Church, Greenville

Rev. Thomas Sloan  
Enoree Baptist Church

Rev. Robert C. Taylor  
St. Francis Mission

Rev. Stephen R. Vance  
Eastminster Presbyterian Church

Rev. Buz Wilcoxon  
Fourth Presbyterian Church

Rev. Antwion Yowe  
Reedy River Missionary Baptist Church

## Public Policy Committee

Jim Burns, Chair  
Greenville County Council

Camilla F. Hertwig, Vice Chair  
Strom Thurmond Institute

Howell Clyborne  
Greenville Hospital System

Tim Ervolina  
United Way Association  
of South Carolina

Gerald K. Howard  
Greenville Area Development  
Corporation

John D. Malone  
James A. Pierce  
Marietta Pallet Company, Inc.

C. Diane Smock  
Upstate Mediation Center

Baxter M. Wynn  
First Baptist Church, Greenville

## Hands On Greenville Advisory Board

Roberta A. Etzkorn, Chair  
O'Neal, Inc.

David Ramseur, Vice Chair  
The Palmetto Bank

Linda M. Brown  
Prudential C. Dan Joyner Co.  
REALTORS

Gaby Dibo  
UPS

Margery Foody  
Netsmart Public Health

Karen K Potter  
Greenville Hospital System

Julie Hayes  
Synnex Corporation

Guy Hempel  
WHNS-Fox Carolina

David A. Jones  
Jackson Marketing Group

John Keenon  
GE Energy

Brock Koonce  
Greenville Forward

Janet Krupka  
Michelin North America

Lisa Lanz  
Costco Wholesale

Jill F. Mashburn  
Fluor Corporation

A. Foster McKissick III  
Fairway Ford, Inc.

Hannah Rogers Metcalfe  
Wyche, P.A.

E. Cheryl Ponder  
SC Governor's School for the  
Arts & Humanities

Jennifer Powers  
Elliott Davis

Michael Teachey  
Greenville County Recreation District  
Edward J. Walsh

## Finance & Operations Committee

Jerry Chapman, Chair  
Duke Energy

Doran Dunaway  
Greenville Hospital System

Art Fuller  
Janice Johnson

First Baptist Church, Greenville  
Tami McKnew

Smith Moore Leatherwood LLP  
Jason Richards

NAI Earle Furman, LLC  
Matt Smith

Assetpoint, LLC  
Barbara Wilson

Renewable Water Resources

## Audit Committee

Scott Evans, Chair  
BB&T

Jerry Chapman  
Duke Energy

Art Fuller  
Curtis Harkness

Greenville Technical College  
Suzanne Mize

The Blood Connection

**All annual campaign and  
Leadership Giving volunteers  
were recognized in the  
Celebration of Giving  
document published in  
January 2011.**

# 2010 Event Sponsors

The Event Sponsor program provides sponsorship for donor recognition and cultivation events.

## Platinum

Wells Fargo

## Gold

Budweiser of Greenville  
Gallivan, White & Boyd, P.A.  
Greenville Hospital System  
TD Bank

## Silver

Dixon Hughes Goodman LLC  
Elliott Davis, LLC  
Greenville First Bank  
KPMG LLP  
World Acceptance Corporation

## Bronze

Agilysys  
Bank of America, N.A.  
BankGreenville  
Smith Moore Leatherwood LLP  
Sullivan Company, LLC

## In-Kind Creative Services and Media

Thanks to the generosity of these creative services and media sponsors, United Way is able to share success stories and how donor dollars are being invested to change lives throughout our community.

Because no United Way funds are used to purchase advertising, we rely on the giving spirit of local media organizations and creative agencies for their pro-bono support. Our sincere thanks to the businesses and organizations listed below.

### Print Media

The Greenville News  
The Greenville Journal  
Greenville Magazine

### Outdoor Media

Fairway Outdoor Advertising

### Creative Services

Erwin-Penland, Inc.

### Television

WYFF 4  
WHNS - Fox Carolina  
Charter Communications

### Radio

MY 102.5  
Shine 96.7  
WESC 92.5  
WSSL 100.5  
B93.7  
Magic 98.9

# 2010 Financial Information

## UNITED WAY OF GREENVILLE COUNTY Statement of Activities

For the Year Ended December 31, 2010  
(with comparative totals for 2009)

	2010 Audited	2009 Audited
<b>Revenues, Gains and Other Support</b>		
Campaign results (net of uncollectibles)	\$14,073,560	\$13,345,255
Less: Donor designations	(2,382,766)	(2,427,951)
Endowment contributions	131,320	64,963
Capital campaign contributions	-	1,202
Grants for Initiatives	771,701	618,160
Gifts in kind	292,170	246,151
Other grants and contributions	388,875	54,471
Investment income	68,665	88,289
Donor designation fees	243,441	204,531
<b>TOTAL SUPPORT/REVENUE</b>	<b>13,586,966</b>	<b>12,195,071</b>
Allocations and Functional Expenses		
Agency allocations and grants	9,344,708	9,725,906
Less: Donor designations	(2,518,153)	(2,390,873)
Community Initiatives	1,712,938	1,176,605
Community Services and Outreach	1,592,358	1,576,259
<b>TOTAL ALLOCATIONS AND FUNCTIONAL EXPENSES</b>	<b>10,131,851</b>	<b>10,087,897</b>
United Way System Supporting Services	2,256,265	2,066,588
<b>TOTAL EXPENSES</b>	<b>12,388,116</b>	<b>12,154,485</b>
CHANGE IN NET ASSETS FROM OPERATIONS	1,198,850	40,586
Pension benefit obligation adjustment	91,581	47,048
Unrealized gains (losses) on investments	214,184	425,258
Net Assets beginning of the year	19,610,197	19,097,306
Net Assets end of the year	<b>21,114,812</b>	<b>19,610,198</b>



# Thank you.

As our volunteers, our donors, our advocates and our partners, you made 2010 a landmark year for United Way of Greenville County and we can't thank you enough. By working together, we've made great progress towards fulfilling our mission to improve people's lives and build a vital, caring community.

We invite you to help us continue this important work and be a part of the change. You can give. You can advocate. You can volunteer. That's what it means to LIVE UNITED.

## **Edith Sales**

2011 United Way Thank You  
Drawing Contest Winner



JOIN HANDS. OPEN YOUR HEART  
LEND YOUR MUSCLE.  
GIVE AN HOUR. GIVE A SATURDAY.  
**THINK WE BEFORE ME.**  
REACH OUT A HAND TO ONE AND  
INFLUENCE THE CONDITION OF ALL.  
THAT'S WHAT IT MEANS TO  
**LIVE UNITED.**

**GIVE. ADVOCATE. VOLUNTEER.**  
**LIVE UNITED**<sup>®</sup>



United Way  
of Greenville County