



***"Economic Development: Making the link between quality child care, pre-kindergarten and economic development"***

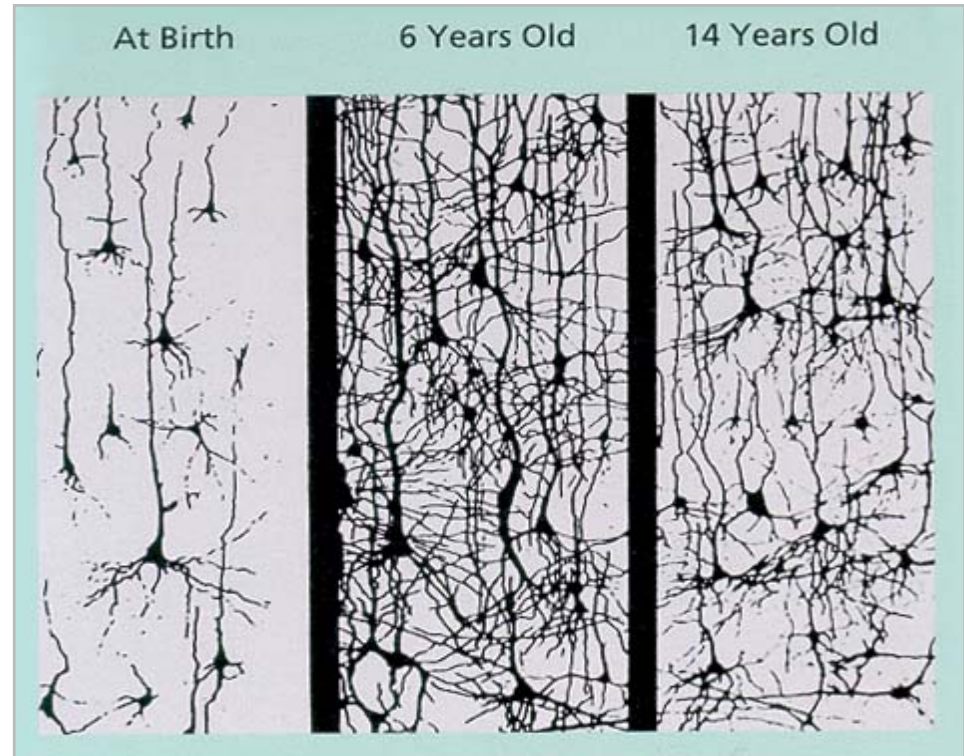
United Way of Greenville County Success By 6<sup>®</sup>  
Child Care Resource & Referral of Upstate SC  
*Committee: Future Investments in Children*

Upstate Alliance Presentation  
June 20, 2007

# Synapse Development

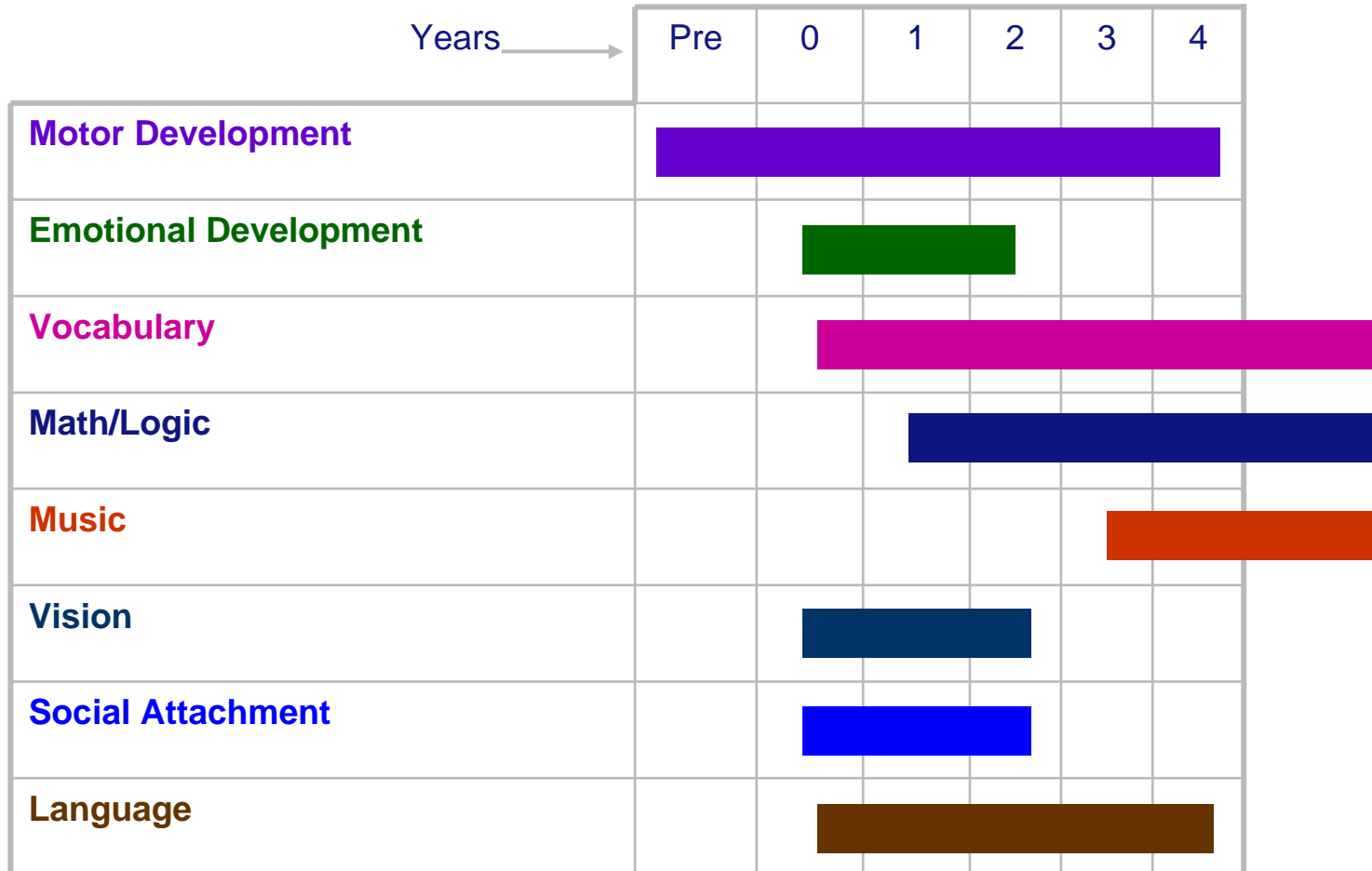
## Synapses:

- 50 trillion at birth
- 1000 trillion at 1 year
- Pruned in adolescence
- 500 trillion at 20 years



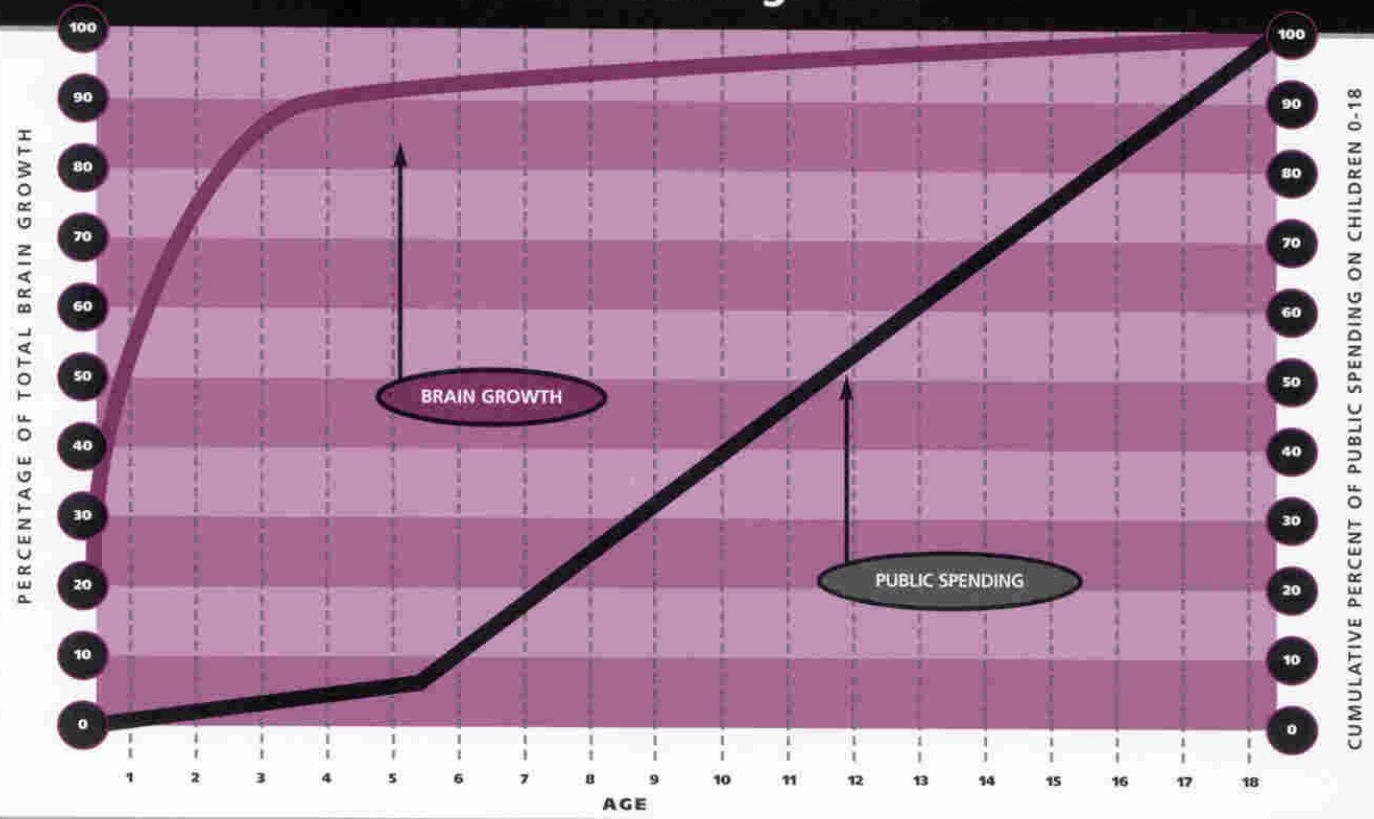
**Synapses are created at an astonishing speed in the first three years of life. Until they are about 10 years old, children's brains have twice as many synapses as adults' brains.**

# Windows of Opportunity: Optimum Times for Learning



Adapted from The National Center for Family Literacy 1998 Video,  
Small Wonders: Early Brain Development.

## Brain Growth Versus Public Expenditures on Children Age 0-18



Source: Brain development: Figure 2.4 in D. Purves, *Body and Brain*, Harvard University Press, 1988, adapted from D.W. Thompson, *On Growth and Form*, Cambridge University Press, 1951. Public spending on children: Derived from Table 1 in R. Haveman and B. Wolfe, "The Determinants of Children's Attainments: A Review of Methods and Findings," *Journal of Economic Literature*, Vol. 33, December 1995, pp. 1829-1878.

# Child Care Facts at a Glance



## 2002 Average Childcare Costs in SC

Average weekly charge

Centers	Homes
\$80.40	\$68.41

2005 South Carolina Kids Count

## Child Care Affordability in SC

Family Size

Income @ 100% of Poverty (2006 guidelines\*)

Childcare @ \$80.40/wk X 52 weeks = \$4,108/year

% of income required for average cost of childcare

Money left after childcare for rent, utilities, food, etc

\*Federal Register, Vol. 71, No. 15, January 24, 2006, pp. 3848-3849

Family Size			
2	3	4	5
\$11,250	\$14,150	\$17,050	\$19,950
\$4,181	\$4,181	\$4,181	\$4,181
37%	30%	25%	21%
\$7,069	\$9,969	\$12,869	\$15,769

## Hourly Wage of Childcare Staff in SC

% of centers by lead staff hourly wage

% of centers by assistant staff hourly wage

<\$6/Hr	\$6-\$8/Hr	>\$8/Hr
25.2%	57.7%	17.1%
36.3%	51.4%	12.3%

SC Child Care: Survey of the Workforce 2000. J. Marsh (2001)

# Child Care Facts at a Glance



Children < 6 with Mothers in Workforce	% Moms	Total**	Quality Child Care
	Working	Children < 5	Spaces Needed
In 2000, 66.1% of mothers were in workforce	66.1%	281,299	185,939

*2005 South Carolina Kids Count; \*\*SC Community Profiles 2005*

South Carolina Child Care Space Availability	Regulated	Licensed	Registered
	Spaces	Facilities	Programs
Regulated spaces* in South Carolina			
Total "slots"	137,473	126,200	11,273
Percent of total		91.8%	8.2%

*\*does not include registered church spaces (approximately 30,400)*

*2005 South Carolina Kids Count*

Distribution by Type of Facility	Centers	Family Home	Group Home	Church	Total
Number of Spaces	113,553	10,036	3,299	10,448	137,473
% of total spaces	82.6%	7.3%	2.4%	7.6%	100.0%

*2005 South Carolina Kids Count*

# Education Level of South Carolina's Early Learning Staff

## Education Levels of Center Staff and Child Care Home Lead Providers

- In 46.7% of centers, most lead staff had only a high school degree.
- In 51.4% of centers, most assistant staff had only a high school degree.
- In 47.5% of centers, few to none of provider staff had early childhood credentials.
- In child care homes, 57.4% of lead providers had no more education than a high school diploma or GED.
- In child care homes, 15.7% of lead providers had less than a high school degree.

*SC Child Care: Survey of the Workforce 2000. J. Marsh (2001)*

## Education Level of Public 4-year-old Kindergarten Teachers

- Public School Setting – BA in Early Childhood Education
- Child Care Setting – AA in Early Childhood Education

**CHILD CARE TRENDS**

	<sup>3</sup> Regulated Centers & Family Child Care Homes *	<sup>4</sup> Children 5 Years-9 Years	<sup>4</sup> Children Under 6 in households all parents work	<sup>4</sup> Annual Income of typical family with children under 18	<sup>4</sup> Average cost of child care for an infant (birth-11 months)	% of income	<sup>4</sup> Average Cost of child care for a toddler (12 months-35 months)	% of income	<sup>4</sup> Average cost of childcare for a preschooler (3 and 4 yrs)	% of income	<sup>4</sup> Total Family Households	<sup>4</sup> Total Households w/children under 18	<sup>4</sup> Total Families in Poverty	<sup>4</sup> Families in Poverty w/children under 18	<sup>4</sup> Families in Poverty w/children under 5
State of South Carolina	<sup>5</sup> 3,665	285,243	186,013	*** \$56,433	** \$4,212	8%	** \$4,108	7%	** \$3,952	7%	1,072,822	495,276	115,899	87,631	39,142
<b>Counties:</b>															
Abbeville	22	1,812	1,191	\$38,847	\$3,744	10%	\$3,744	10%	\$3,588	9%	7,288	3,216	738	550	214
Anderson	128	11,478	7,655	\$44,229	\$4,160	9%	\$4,004	9%	\$3,744	9%	47,278	20,749	4,328	3,083	1,546
Cherokee	35	3,865	2,863	\$39,393	\$3,952	10%	\$3,900	10%	\$3,796	10%	14,614	6,711	1,616	1,156	528
Greenville	238	26,556	16,892	\$50,322	\$5,356	11%	\$5,148	10%	\$4,888	10%	102,012	47,675	8,158	6,139	2,934
Greenwood	37	4,814	3,730	\$42,022	\$4,576	11%	\$4,576	11%	\$4,472	11%	17,754	8,166	1,759	1,313	657
Laurens	31	4,912	3,341	\$39,739	\$4,056	10%	\$4,004	10%	\$3,848	10%	18,870	8,536	2,194	1,653	492
Oconee	43	4,247	2,895	\$43,047	\$3,900	9%	\$3,744	9%	\$3,484	8%	19,589	7,786	1,489	1,083	508
Pickens	69	6,935	4,954	\$44,507	\$4,472	10%	\$4,316	10%	\$4,160	9%	28,453	12,899	2,222	1,494	699
Spartanburg	160	18,220	12,231	\$45,349	\$4,472	10%	\$4,316	10%	\$4,160	9%	69,299	31,469	6,401	4,741	1,994
Union	19	2,005	1,377	\$37,661	\$3,432	9%	\$3,380	9%	\$3,276	9%	8,495	3,552	947	708	314
<b>Cities:</b>															
Clinton	11	502	263	\$31,842	\$4,056	10%	\$4,004	10%	\$3,848	10%	1,667	781	361	241	125
Greer	32	1,161	805	\$41,864	\$5,564	13%	\$5,356	13%	\$4,940	12%	4,510	2,138	556	450	159
Greenville	130	3,141	2,100	\$44,125	\$5,468	12%	\$5,200	12%	\$4,836	11%	12,573	5,427	1,560	1,231	510
Spartanburg	62	2,897	1,711	\$36,108	\$4,888	14%	\$4,888	14%	\$4,576	13%	9,717	4,625	1,896	1,627	742
Union	17	585	395	\$34,714	\$3,432	10%	\$3,380	9%	\$3,224	9%	2,399	968	420	327	129

\* Includes Headstarts except for State  
 \*\* Average of Counties delineated here  
 \*\*\* 2006 Estimated Median Family Income-NCCIC State Data Profiles

# Investing in Early Care and Education Yields a High Return

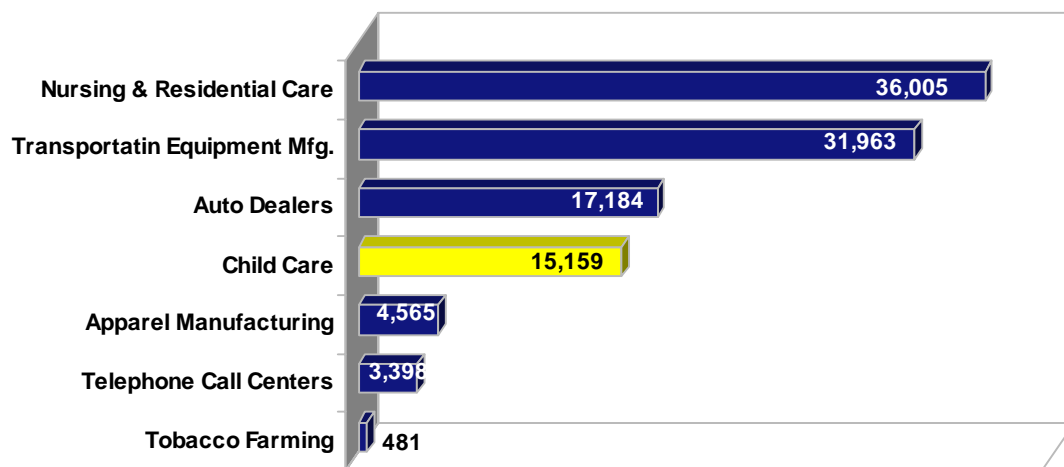


- **Every dollar invested in high quality pre-kindergarten saves up to \$17 in government expenditures by reducing remedial education, crime and unemployment.**
- **Early Care & Education prepares children to succeed in school and the future economy.**
- **Early Care & Education reduces employee turnover and absenteeism.**
- **Overall, the child care industry in South Carolina has an estimated \$787.2 million impact on the state's economy.**

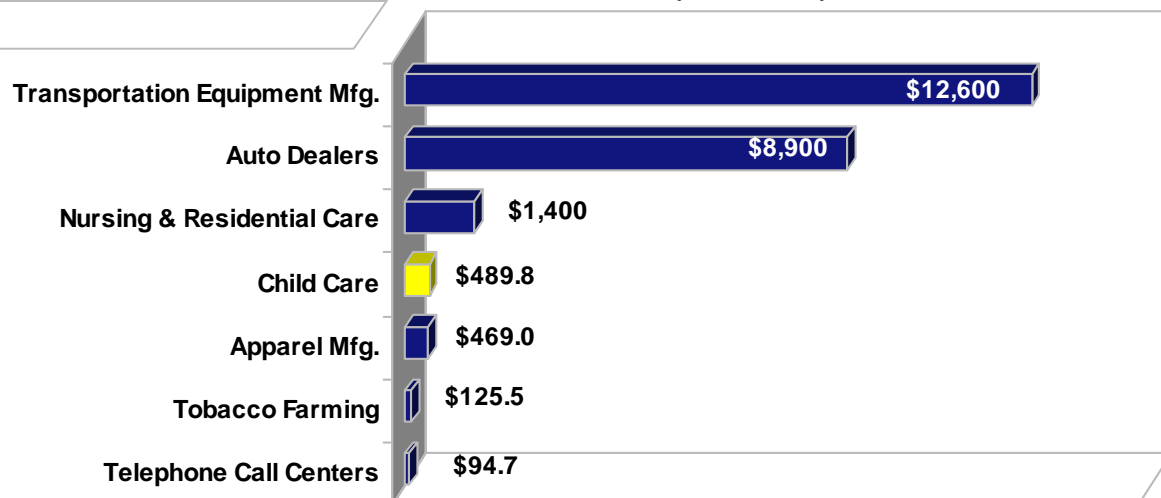
# Investing in Early Care and Education...

## SOUTH CAROLINA

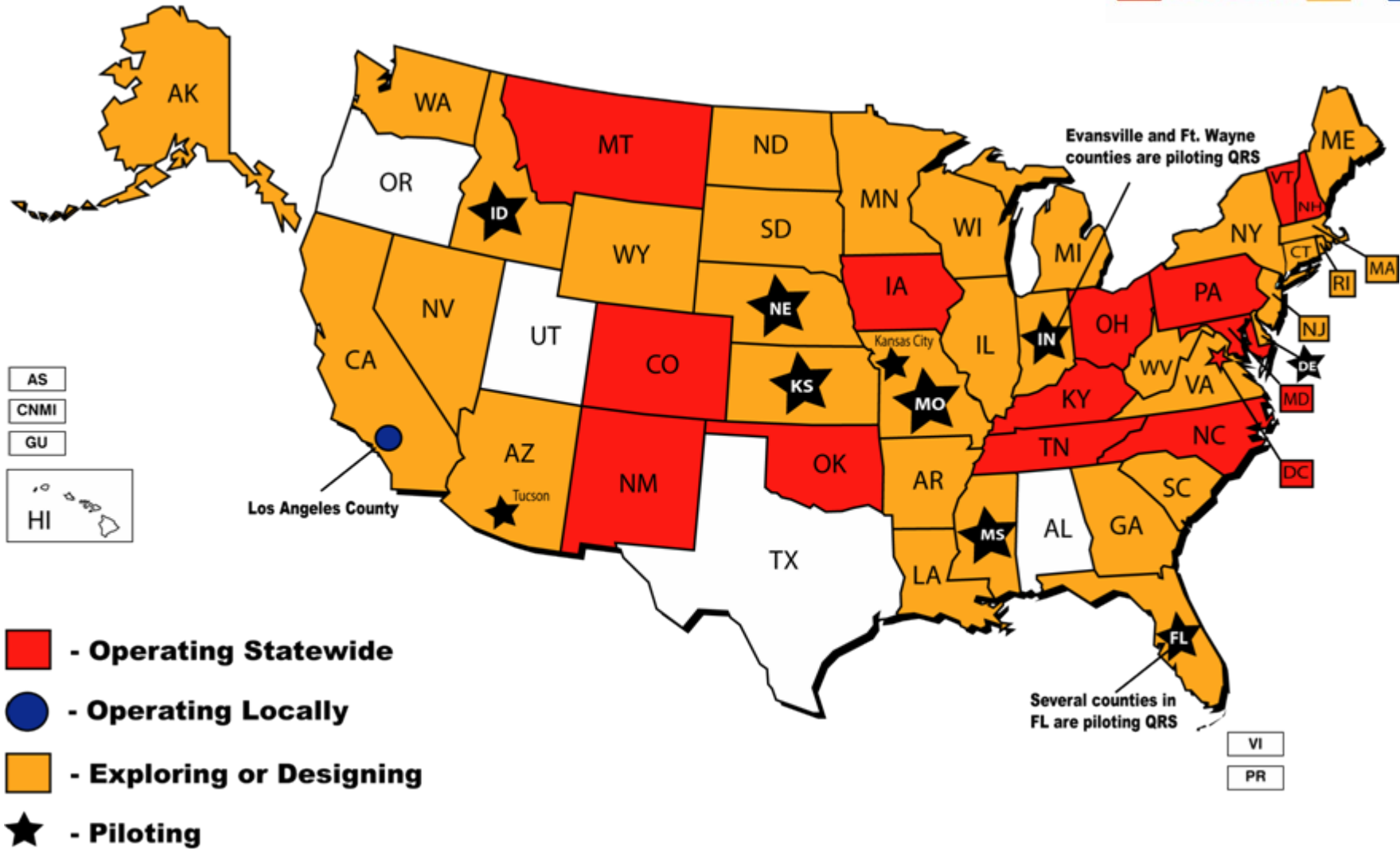
Employment Comparisons,  
 Child Care and Selected Sectors <sup>1</sup>



Gross Receipts Comparisons,  
 Child Care and Selected Sectors  
 (in millions) <sup>1</sup>



# States and Communities Operating, Piloting, or Exploring or Designing a Quality Rating System



Source: Data compiled by the National Child Care Information Center as of April 2007.

## Pre-K around the nation

### Longitudinal Studies on Successful Students<sup>8</sup>

- **Pre-K increases high school graduation rates (Chicago)**
- **Pre-K helps children do better on standardized tests (Michigan)**
- **Pre-K reduces grade repetition (Maryland)**
- **Pre-K reduces the number of children placed in special education (Chicago)**

# Recommendations

- **Incorporate high quality early learning experiences into your county's or city's economic development plan.**
- **Be aware that at the request of the South Carolina General Assembly, a 20 member task force is evaluating Early Childhood Quality Standards.**
- **Give consumers the means, and economic incentives, to differentiate between child care options.**
- **Link South Carolina tax incentives to improvements in the availability of high quality child care.**
- **Encourage all public and private entities that fund child care and early education to focus on strengthening the quality of the current child care industry.**
- **Increase access to capital to help existing child care programs improve the quality of their facility and program.**
- **Talk to your local Success By 6, First Steps or CCR&R partner in your community for immediate opportunities.**

## References

- <sup>1</sup> “The Economic Impacts of the Child Care Industry in South Carolina – *Investing Early for Future Economic and Community Benefits* – July 2006: Prepared by Dr. Donald L. Schunk, Assistant Professor of Economics and Research Economist.
- <sup>2</sup> The Annie E. Casey Foundation 2006 Kids County Data Book
- <sup>3</sup> Child Care Resource & Referral of Upstate SC
- <sup>4</sup> U. S. Census Bureau: 2000
- <sup>5</sup> South Carolina Department of Social Services
- <sup>6</sup> Economic Policy Institute: Facts & Figures *Enriching Children, Enriching the Nation*: Prepared by economist Robert G. Lynch
- <sup>7</sup> Data compiled by the National Child Care Information Center as of April 2007
- <sup>8</sup> Pre-K Now [www.preknow.org](http://www.preknow.org)

### Other:

Funding for June 20, 2007 luncheon between Upstate Alliance and Early Care and Education Partners was made possible through a grant from the Committee of Economic Development. [www.ced.org](http://www.ced.org)

*Future Investments in Children: Community Leaders Focusing on Quality Child Care (FIC)*. This committee was formed by United Way of Greenville County’s Success By 6. Members of FIC are community leaders throughout the region.

Child Care Resource & Referral (CCR&R) of Upstate SC is an initiative of United Way of Greenville Co Success By 6® ([www.childcarehelpline.org](http://www.childcarehelpline.org)) 864-467-4800. Primary funding for CCR&R comes from SC DSS Child Care Division. CCR&R offers resource and referral services for parents, individuals and employers seeking information on choosing quality child care. Seminars and resources in the workplace are available upon request. CCR&R serves the following upstate counties: Abbeville, Anderson, Cherokee, Chester, Greenville, Greenwood, Lancaster, Laurens, McCormick, Oconee, Pickens, Spartanburg, Union and York. To receive services outside this region, contact: [www.childcaresc.org](http://www.childcaresc.org) or 1-803-779-2279



It's time to  
**RAISE THE  
BAR** so that ALL  
children enter  
school healthy  
and ready to  
learn to be  
successful in life!

